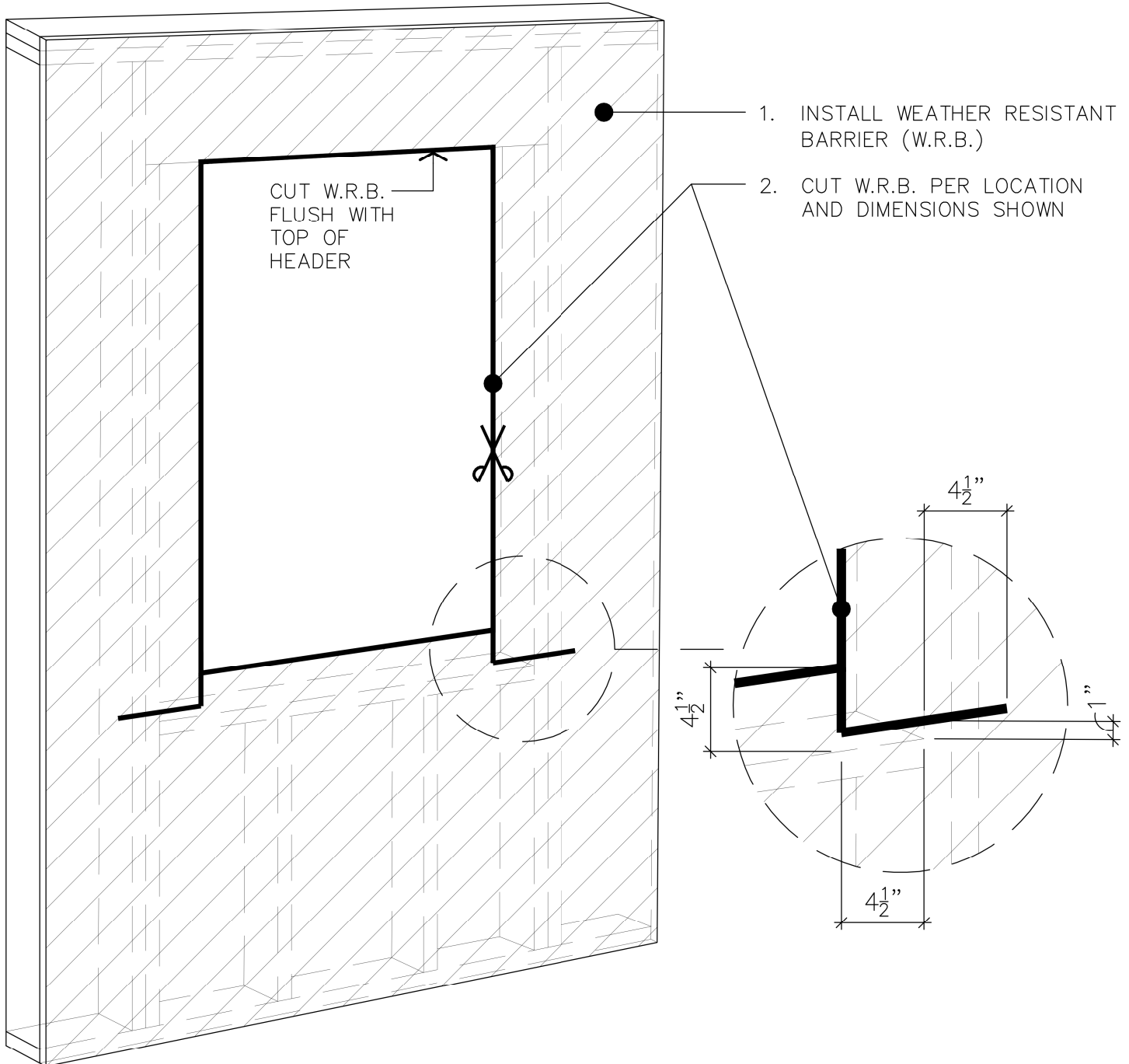




SiilDRY®

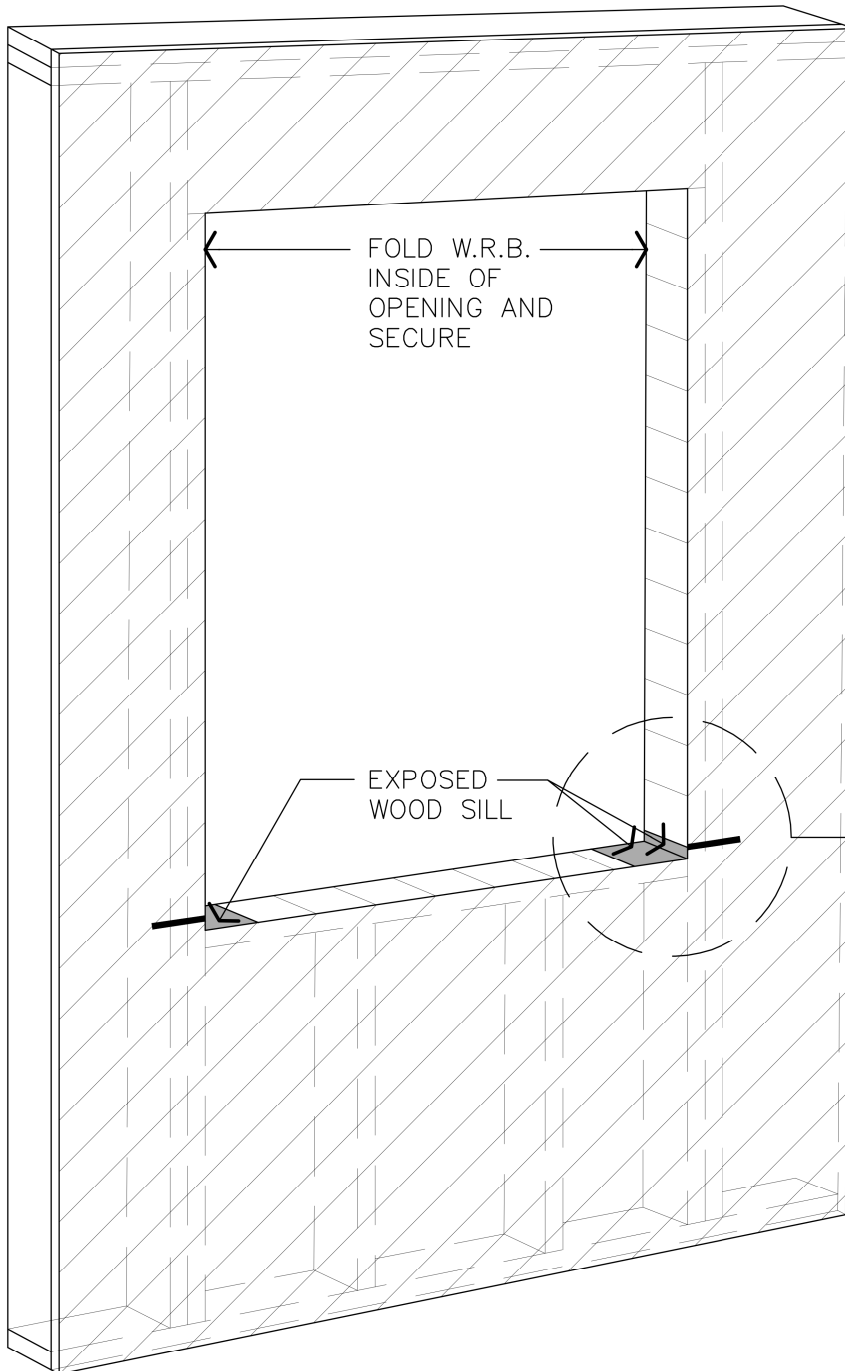
INSTALLATION INSTRUCTIONS - STEP 1





SillDRY®

INSTALLATION INSTRUCTIONS - STEP 2



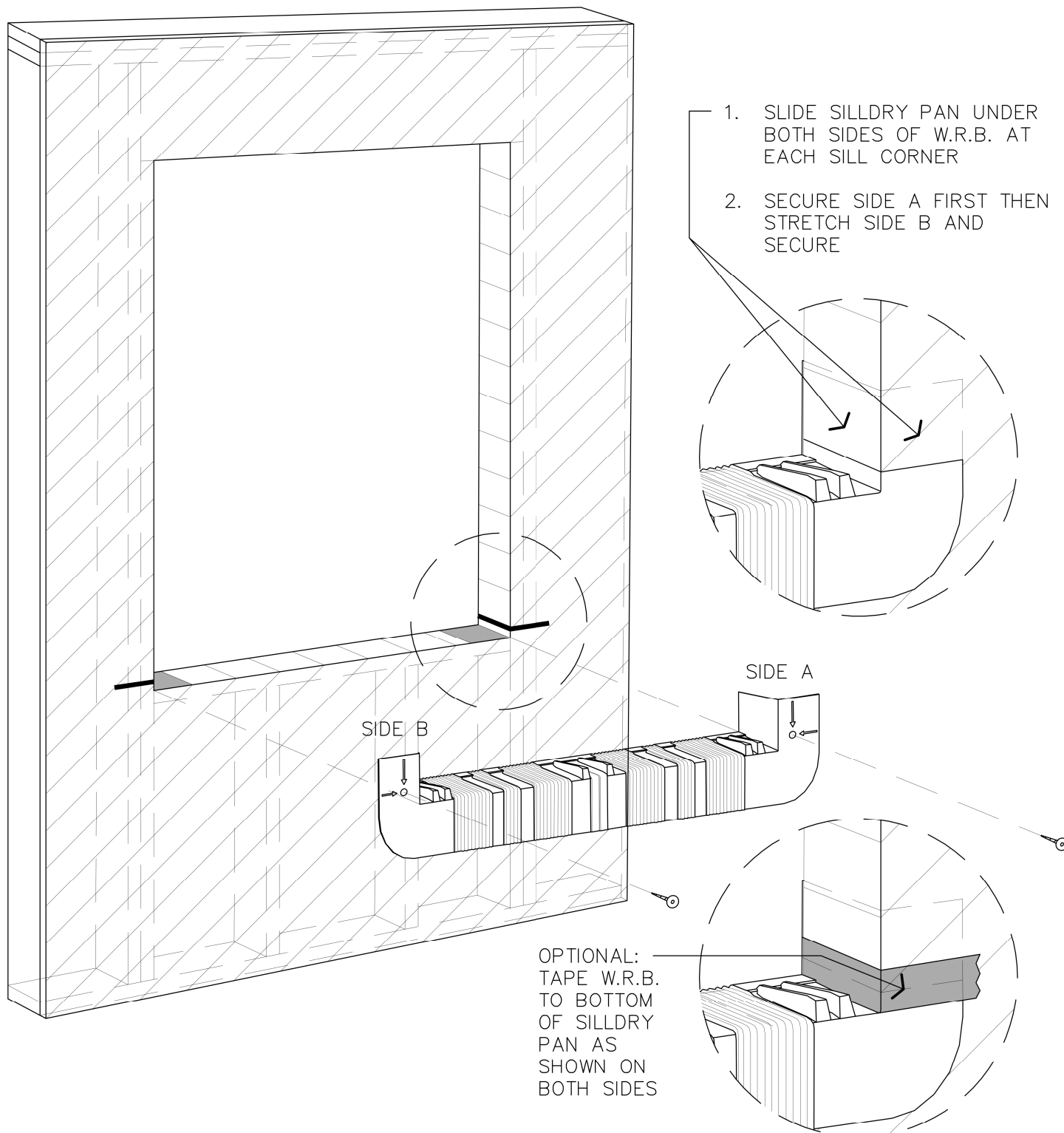
1. FOLD W.R.B. INSIDE AT SIDES AND SILL AND SECURE

2. LEAVE BOTTOM CORNERS LOOSE TO ALLOW FOR SILLDRY PAN TO SLIDE UNDERNEATH



SillDry®

INSTALLATION INSTRUCTIONS - STEP 3





SiILDry®

INSTALLATION INSTRUCTIONS - STEP 4

1. APPLY A CONTINUOUS BEAD OF HIGH GRADE SILICONE AROUND TOP AND 2 LEGS OF WINDOW FLANGE
2. INSTALL WINDOW PER MANUFACTURER'S INSTALLATION SPECIFICATIONS
3. INSTALL HEAVY BEAD OF SEALANT "NPC SOLAR SEAL 900" OR "OSI QUAD" BENEATH BOTTOM FLANGE OF SiILDry DURING WINDOW INSTALLATION TO PREVENT AIR INFILTRATION

